

# OFFICER CENTRAL STAGE 12 YOURLAND PTY LTD

## GENERAL NOTES:

- SURVEY**
- ALL LEVELS ARE TO AUSTRALIAN HEIGHT DATUM AND ALL COORDINATES ARE TO MAP GRID OF AUSTRALIA (MGA) 94, ZONE 55.
  - ALL EXISTING SURFACE LEVELS SHOWN ON THE ENGINEERING DRAWINGS HAVE BEEN INTERPOLATED FROM A DIGITAL TERRAIN MODEL. THESE LEVELS HAVE BEEN USED AS THE BASIS FOR ALL ENGINEERING DESIGN AND DETERMINATION OF QUANTITIES AND ARE ACCURATE TO WITHIN ±0.05m.
  - ALL WORKS TO BE CARRIED OUT IN ACCORDANCE WITH AS2124-1992 GENERAL CONDITIONS OF CONTRACT, THE ROAD & DRAINAGE SPECIFICATION, APPROVED MUNICIPALITY SPECIFICATIONS AND STANDARD DRAWINGS AND TO THE SATISFACTION OF THE SUPERINTENDENT AND THE MUNICIPAL ENGINEER OR HIS REPRESENTATIVE.
  - ROAD CHAINAGES REFER TO ROAD CENTRELINES. CHAINAGES FOR INTERSECTIONS AND CUL-DE-SACS REFER TO THE LIP OF KERB
- EARTHWORKS**
- THE LOCATION OF EXISTING SERVICES SHOULD BE DETERMINED BY THE CONTRACTOR PRIOR TO COMMENCING ANY EXCAVATION BY CONTACTING ALL LOCAL SERVICE AUTHORITIES. ANY EXISTING SERVICES SHOWN ON THESE DRAWINGS ARE OFFERED AS A GUIDE ONLY AND ARE NOT GUARANTEED AS CORRECT.
  - WHERE REQUIRED ANY BUILDINGS, TROUGHS, FENCES AND OTHER STRUCTURES ON SITE ARE TO BE REMOVED AS DIRECTED BY THE ENGINEER. THE COST OF REMOVAL IS TO BE INCLUDED IN THE OVERALL EARTHWORKS FIGURE UNLESS A SPECIFIC ITEM FOR REMOVAL IS DENOTED IN THE SCHEDULE.
  - ALL EXCAVATED ROCK AND SURPLUS SPOIL TO BE REMOVED AND DISPOSED OFF SITE UNLESS NOTED OTHERWISE.
  - ALL FILLING ON LOTS AND WITHIN ROAD RESERVES GREATER THAN 200mm IS TO BE UNDERTAKEN USING LEVEL 1 SUPERVISION AND BE COMPLETED IN ACCORDANCE WITH AS 3798-2007. FILL AREAS ARE TO BE STRIPPED OF TOPSOIL, FILLED AND REPLACED WITH TOPSOIL (WHERE REQUIRED) TO OBTAIN THE FINAL LEVELS SHOWN ON THE DRAWINGS.
  - FILLING MATERIAL IS TO BE IN ACCORDANCE WITH THE SPECIFICATION, AS 3798-2007 & TO THE SATISFACTION OF COUNCIL AND THE SUPERINTENDENT.
  - ALL BATTERS SHALL BE 1 IN 6, UNLESS OTHERWISE SHOWN.
  - NO FILL OR STOCKPILING OF MATERIAL IS TO BE PLACED ON ANY RESERVE FOR PUBLIC OPEN SPACE UNLESS OTHERWISE DIRECTED OR APPROVED BY THE SUPERINTENDENT.
  - TBM'S TO BE RE-ESTABLISHED BY THE LICENSED SURVEYOR IF FOUND TO BE MISSING AT THE COMMENCEMENT OF CONSTRUCTION. THE CONTRACTOR WILL BE RESPONSIBLE FOR CARE AND MAINTENANCE OF T.B.M.'S THEREAFTER.
  - AT LEAST 3 DAYS PRIOR TO COMMENCING WORK ON EXCAVATIONS IN EXCESS OF 150mm DEEP, A NOTIFICATION FORM MUST BE SENT TO WORKSAFE. THE CONTRACTOR IS TO COMPLY WITH WORKSAFE, THE MINES (TRENCHES) REGULATION 1982, THE MINES ACT 1958 AND OCCUPATIONAL HEALTH AND SAFETY ACT 1985, 2004.
  - ALL SERVICE TRENCHES UNDER DRIVEWAYS, FOOTPATHS AND PARKING BAYS TO BE BACKFILLED WITH CLASS 2 CRUSHED ROCK. SERVICE TRENCHES LESS THAN 750mm BEHIND KERB AND CHANNEL OR PAVED TRAFFIC AREAS ARE ALSO TO BE BACKFILLED WITH COMPACTED CLASS 2 CRUSHED ROCK.
  - WHERE REQUIRED, ALL EXISTING DAMS, DEPRESSIONS AND DRAINS ARE TO BE BREACHED, DRAINED, DESLUGGED AND SHALL BE EXCAVATED TO A CLEAN FIRM BASE. THE SURFACE SHALL BE INSPECTED, APPROVED AND LEVELED BY THE ENGINEER PRIOR TO COMMENCEMENT OF FILLING. THE FILL SHALL BE APPROVED SELECTED ON SITE MATERIAL OR APPROVED IMPORTED MATERIAL. THE FILL SHALL BE PLACED UNDER CONTROLLED MOISTURE CONDITIONS IN ACCORDANCE WITH THE SPECIFICATION
  - NO BLASTING TO BE CARRIED OUT WITHIN THE MUNICIPALITY WITHOUT OBTAINING COUNCIL'S PERMISSION.
- SERVICES**
- GAS AND WATER CONDUITS ARE TO BE,  
Ø50mm - CLASS 12 P.V.C. - SINGLE SERVICE  
Ø100mm - CLASS 12 P.V.C. - DUAL SERVICE (DRINKING AND NON DRINKING WATER)
- WITH THE FOLLOWING MINIMUM COVER TO FINISHED SURFACE LEVELS:  
ROAD PAVEMENT - 0.80m  
VERGE, FOOTPATHS - 0.45m
- LOCATION OF THE CONDUITS TO BE MARKED ON THE FACE OF KERB ON EACH SIDE OF THE ROAD WITH A 50mm HIGH LETTER (G FOR GAS, W FOR WATER, E FOR ELECTRICITY AND T FOR TELECOMMUNICATIONS).- ALL SERVICE CONDUIT TRENCHES UNDER ROAD PAVEMENTS TO BE BACKFILLED IN ACCORDANCE WITH RELEVANT MUNICIPALITY OR ROAD AUTHORITY SPECIFICATION.

**STORM WATER DRAINAGE**

  - AG/SUBSOIL DRAIN TO BE LAID BEHIND KERB WHERE REQUIRED IN ACCORDANCE WITH THE COUNCIL STANDARD DRAWINGS AND CONNECTED TO UNDERGROUND DRAINAGE.
  - ALL STORMWATER DRAINS ARE TO BE CLASS '2' R.C. PIPES UNLESS OTHERWISE SHOWN. ALL R.C. JOINTS ARE TO BE RUBBER RING JOINTED (R.R.J.) UNLESS OTHERWISE SHOWN
  - CENTRELINES OF ALL EASEMENT DRAINS ARE OFFSET 1.0m OR 2.3m (WHERE OUTSIDE OF SEWER) FROM THE PROPERTY LINE UNLESS SHOWN OTHERWISE.
  - WHERE CURVED PIPES ARE SHOWN ON THE FACE PLANS THEY ARE TO BE LAID PARALLEL TO THE BACK OF KERB, EXCEPT WHERE A RADIUS HAS BEEN SPECIFICALLY NOMINATED. CURVED PIPES ARE TO BE APPROVED BY COUNCIL AND IN ACCORDANCE WITH THE MANUFACTURERS SPECIFICATIONS.
  - CCTV RESULTS FOR THE FULL LENGTH OF ALL STORMWATER DRAINAGE PIPES WHERE CARDINIA SHIRE COUNCIL IS RESPONSIBLE AUTHORITY MUST BE SUBMITTED FOR ASSESSMENT. SUBMITTED INFORMATION IS TO BE TO THE SATISFACTION OF THE RESPONSIBLE AUTHORITY. CCTV FOOTAGE TO BE PROVIDED BY CONTRACTOR BEFORE THE ROADS ARE PRIMED AND / OR ASPHALTED. ALL DAMAGED PIPES UNDER ROADS MUST BE REPAIRED AND INSPECTED PRIOR TO THE PRIMING AND ASPHALTING OF THE ROAD AND BEFORE A CERTIFICATE OF PRACTICAL COMPLETION IS ISSUED.

**PAVEMENT**

  - PAVEMENT DEPTHS MAY BE MODIFIED AS DIRECTED BY THE COUNCIL. PAVEMENT TO BE BOXED OUT TO MINIMUM DEPTH DENOTED, INSPECTED AND IF SUBGRADE IS IN QUESTION, FURTHER TESTING CARRIED OUT TO DETERMINE FINAL PAVEMENT DEPTH.
  - WHERE PAVEMENT IS CONSTRUCTED ON FILLING, FILL MATERIAL IS TO BE APPROVED BY THE SUPERINTENDENT AND COUNCIL. FILLING TO BE CONSTRUCTED IN LAYERS 150mm THICK WITH COMPACTION ACHIEVING 95% AUSTRALIAN STANDARD DENSITY.
  - WHEN PAVEMENT EXCAVATION IS IN ROCK ALL LOOSE MATERIAL (INCLUDING ROCKS AND CLAY) MUST BE REMOVED. THE SUB-GRADE MUST THEN BE REGULATED WITH COUNCIL APPROVED MATERIAL.

**SIGNAGE AND LINEMARKING**

  - LINEMARKING AND SIGNAGE TO BE INSTALLED IN ACCORDANCE WITH AS 1742 SERIES UNLESS NOTED OTHERWISE. STREET SIGNS ARE TO BE INSTALLED IN ACCORDANCE WITH COUNCIL STANDARDS.
  - ALL TEMPORARY WARNING SIGNS USED DURING CONSTRUCTION SHALL BE SUPPLIED AND MAINTAINED IN ACCORDANCE WITH AS 1742-3.
  - TACTILE GROUND SURFACE INDICATORS ARE TO BE INSTALLED IN ACCORDANCE WITH THE DISABILITY DISCRIMINATION ACT AND RELEVANT COUNCIL STANDARD DRAWINGS.

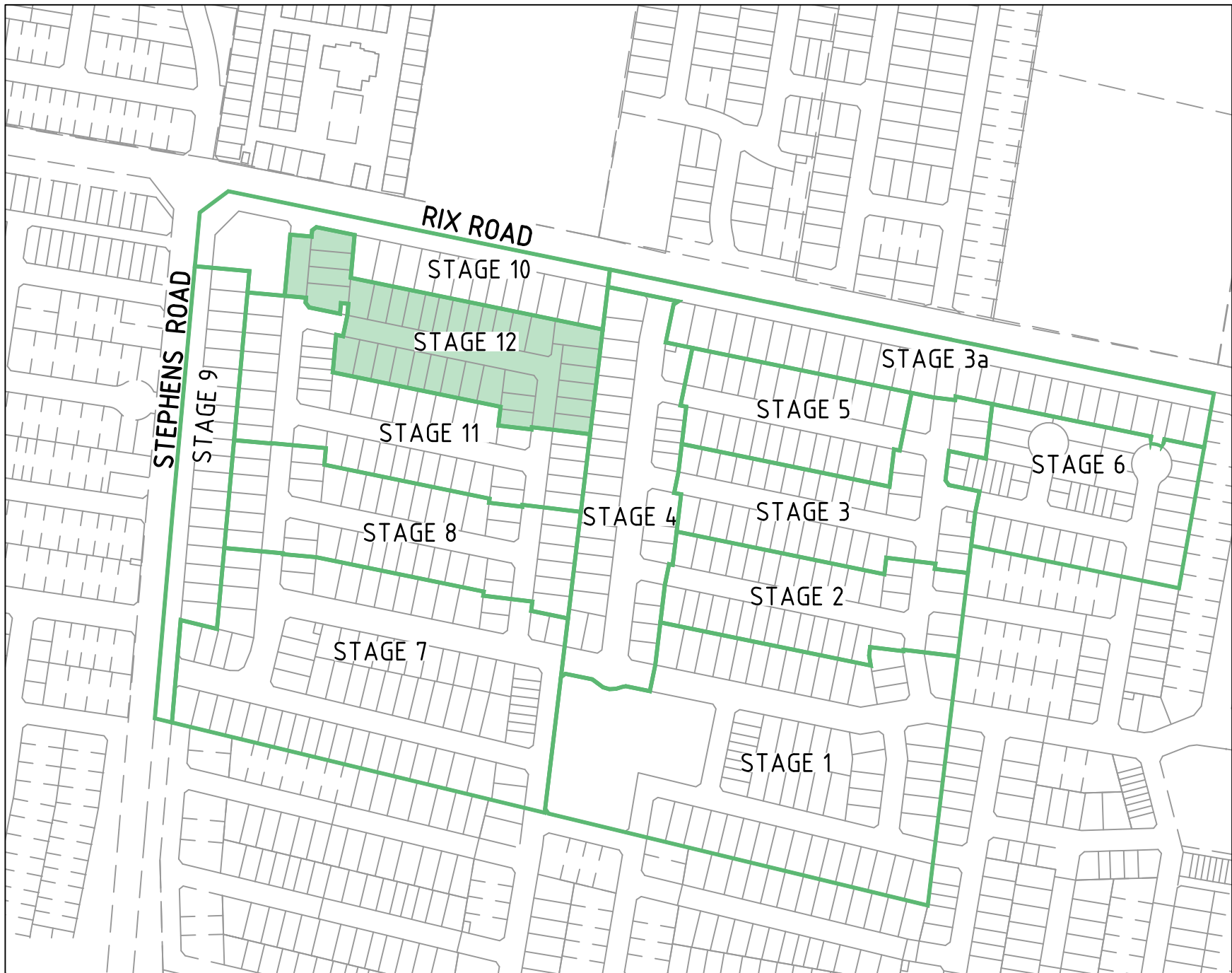
**ENVIRONMENTAL**

  - CONTRACTOR TO PROVIDE AN ENVIRONMENTAL MANAGEMENT PLAN INCLUDING SILT AND SEDIMENT RUNOFF PROTECTION ETC. PRIOR TO THE COMMENCEMENT OF WORKS.
  - ALL TREES AND SHRUBS ARE TO BE RETAINED UNLESS OTHERWISE SHOWN. IF ROAD AND DRAINAGE CONSTRUCTION NECESSITATES THEIR REMOVAL, WRITTEN PERMISSION MUST BE OBTAINED FROM THE SUPERINTENDENT.
  - TREES NOT SPECIFIED FOR REMOVAL ARE TO BE PROTECTED WITH APPROPRIATE EXCLUSION FENCING PRIOR TO COMMENCEMENT OF ANY WORKS.

**MISCELLANEOUS**

  - PRIOR TO PC, PROVIDE THE ALLOCATED STREET NUMBER ON THE KERB IN FRONT OF EACH LOT. THE KERBSIDE NUMBERS MUST BE 100MM WHITE LETTING ON A BLACK BACKGROUND LOCATED ON THE FRONT OF THE KERB AT THE PROPERTY FRONTAGE TO COUNCIL SATISFACTION.
  - UPON COMPLETION OF THE CIVIL WORKS, THE CONTRACTOR SHALL PROVIDE AS CONSTRUCTED PLANS IN AUTOCAD, D-SPEC AND R-SPEC DIGITAL FORMAT TO COUNCIL'S REQUIREMENTS AND TO THE SATISFACTION OF ALL PARTIES.
  - HOUSE DRAIN LOCATIONS ARE TO BE STAMPED ON THE KERB FACE IN ACCORDANCE WITH VPA EDCM303
  - CONTRACTOR TO REFER TO AND COMPLY WITH CHMP / F&F REPORTS PROVIDED IN CONTRACT DOCUMENTS
  - \*COUNCIL WILL NOT ACCEPT ANY RESPONSIBILITY FOR WORKS WHERE AN INSPECTION IS NOT UNDERTAKEN WITH A COUNCIL APPOINTED REPRESENTATIVE

24 HOURS NOTICE IS REQUIRED FOR INSPECTION AT THE FOLLOWING HOLD POINTS:  
PRIOR TO COMMENCEMENT OF THE WORKS.  
INSPECTION OF THE SUBGRADE.  
INSPECTION DURING DRAINAGE WORKS.  
INSPECTION PRIOR TO POURING OF PITS.  
INSPECTION OF SUB SOIL DRAINAGE.  
INSPECTION OF KERB AND CHANNEL BEDDING.  
INSPECTION PRIOR TO ANY CONCRETE WORKS.  
INSPECTION AND TESTING OF EACH PAVEMENT LAYER (BY DEVELOPER OR CONTRACTOR), PRIOR TO PLACING ANY SUBSEQUENT PAVEMENT LAYER.  
COMPACTION TEST RESULTS SHALL BE ISSUED TO COUNCIL.  
INSPECTION PRIOR TO SEALING AND ASPHALT WORKS.  
ANY OTHER INSPECTION HOLD POINTS AS PER EDCM



## LOCALITY PLAN

H 14,000  
SCALE @ A1

## DRAWING SCHEDULE

DRAWING	DESCRIPTION	SHEET No.	REVISION
CR100	GENERAL NOTES	1	3
CR200	ROAD LAYOUT PLANS - FACE PLAN	2	3
CR201	ROAD LAYOUT PLANS - SERVICES PLAN	3	2
CR202	ROAD LAYOUT PLANS - EARTHWORKS PLAN	4	3
CR300	ROAD LONG SECTIONS - SHEET 1	5	1
CR400	ROAD CROSS SECTIONS - SHEET 1	6	1
CR401	ROAD CROSS SECTIONS - SHEET 2	7	1
CR402	ROAD CROSS SECTIONS - SHEET 3	8	1
CR403	ROAD CROSS SECTIONS - TYPICAL CROSS SECTIONS	9	1
CR500	INTERSECTION DETAILS	10	1
CR600	DRAINAGE LONG SECTIONS - SHEET 1	11	1
CR601	DRAINAGE LONG SECTIONS - SHEET 2	12	1
CR700	PAVEMENT AND TYPICAL DETAILS - SHEET 1	13	2
CR701	PAVEMENT AND TYPICAL DETAILS - SHEET 2	14	1
CR800	SIGNAGE AND LINEMARKING	15	2

3

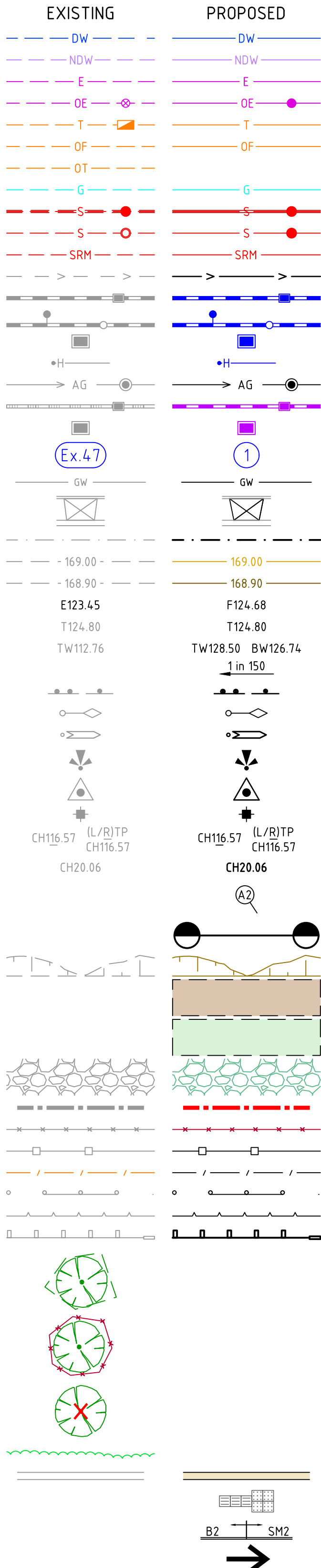


**WARNING**  
BEWARE OF UNDERGROUND/OVERHEAD SERVICES  
THE LOCATION OF SERVICES ARE APPROXIMATE ONLY AND THEIR EXACT POSITION SHOULD BE PROVEN ON SITE. NO GUARANTEE IS GIVEN THAT ALL EXISTING SERVICES ARE SHOWN. SPECIAL CONSIDERATION SHOULD BE GIVEN TO CONSTRUCTION PROCEDURES UNDER OVERHEAD ELECTRICITY TRANSMISSION LINES.

## LEGEND

### DESCRIPTION

- WATER MAIN, VALVE AND HYDRANT  
WATER RECYCLED  
UNDERGROUND ELECTRICITY  
OVERHEAD ELECTRICITY & POLE  
TELECOMMUNICATIONS & SERVICE PIT  
OPTIC FIBRE  
OVERHEAD TELECOMMUNICATIONS  
GAS MAIN  
BRANCH SEWER & MAINTENANCE STRUCTURE  
SEWER & MAINTENANCE STRUCTURE  
SEWER RISING MAIN  
CENTRAL INVERT  
COUNCIL STORMWATER DRAIN AND PIT  
STORM WATER DRAINAGE PROPERTY INLETS  
COUNCIL STORM WATER PITS  
HOUSE DRAIN  
AG DRAIN AND FLUSHER  
MWC STORM WATER DRAIN & PIT  
MWC STORM WATER PITS  
STORM WATER DRAINAGE PIT NUMBER  
GAS & WATER CONDUITS  
CONCRETE VEHICLE CROSSING  
RIDGE / CHANGE OF GRADE LINE  
SURFACE CONTOUR MINOR  
SURFACE CONTOUR MAJOR  
SURFACE LEVEL  
BATTER LEVEL (TOP / TOE)  
RETAINING WALL LEVEL (TOP/BOTTOM)  
EARTHWORKS GRADE  
SIGN AND POST  
LIGHT & POLE (BY OTHERS)  
STREET SIGN  
PERMANENT SURVEY MARK  
TEMPORARY BENCH MARK  
BOLLARD  
ROAD CHAINAGES  
LOT CHAINAGES  
SETOUT POINT  
LIMIT OF WORKS  
BATTER  
EXCAVATION GREATER THAN 0.20m  
FILLING GREATER THAN 0.20m  
ROCK BEACHING  
RETAINING WALL  
FENCE - TREE PROTECTION  
FENCE - VEHICLE EXCLUSION  
FENCES  
GUARD RAIL  
TREE (& SURVEYED CANOPY) TO BE RETAINED  
TREE TO BE PROTECTED  
TREE TO BE REMOVED  
VEGETATION LINE  
FOOTPATH  
TACTILE GROUND SURFACE INDICATOR  
KERB TRANSITION  
ROAD FLOW PATH



**OFFICER CENTRAL  
STAGE 12  
ROAD AND DRAINAGE  
GENERAL NOTES**  
CARDINIA SHIRE COUNCIL  
YOURLAND PTY LTD

**AS CONSTRUCTED**

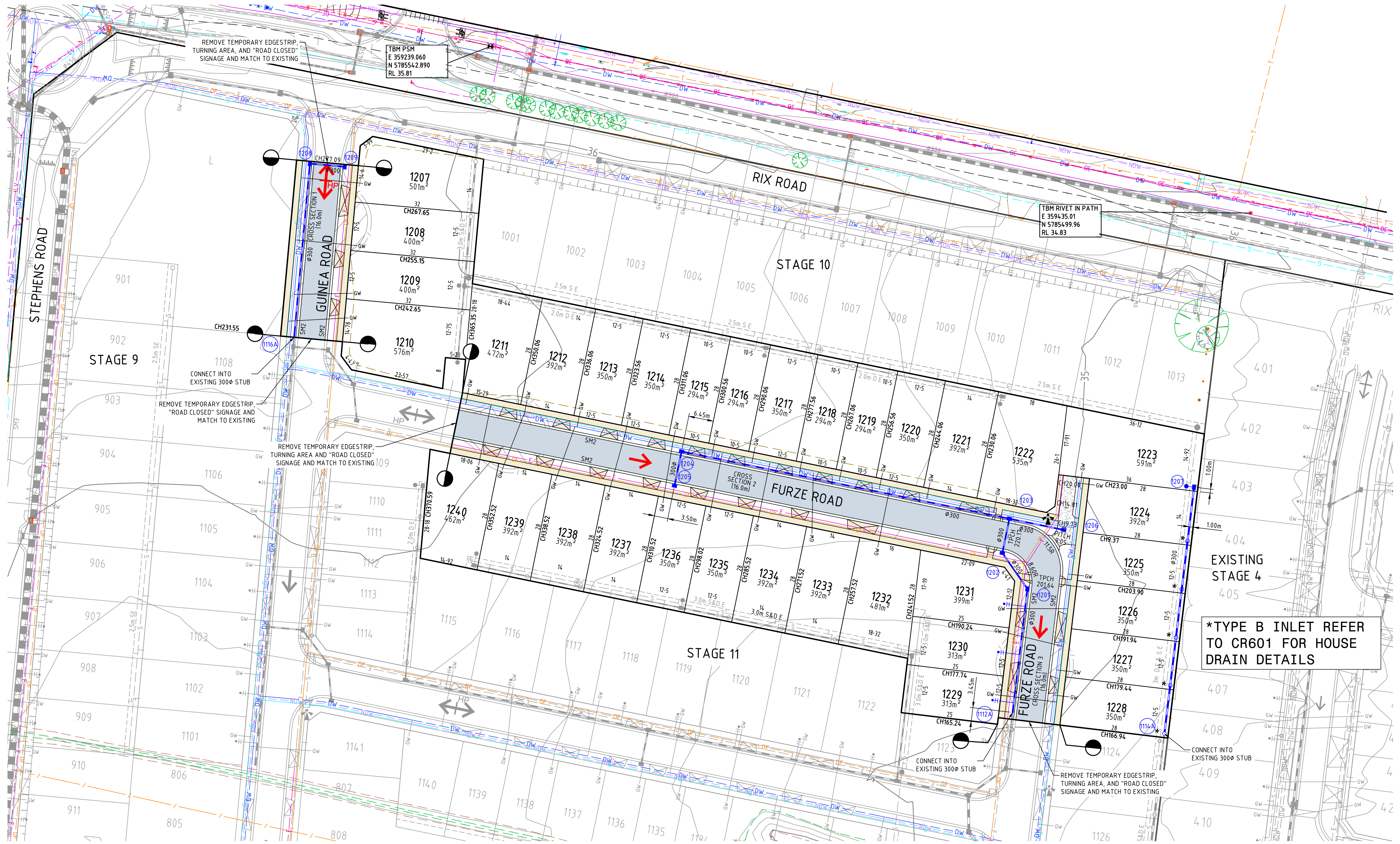
Drg No

310311CR100

Rev

3



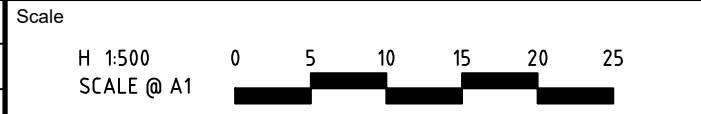


\*TYPE B INLET REFER  
TO CR601 FOR HOUSE  
DRAIN DETAILS



**WARNING**  
BEWARE OF UNDERGROUND/OVERHEAD SERVICES  
THE LOCATION OF SERVICES ARE APPROXIMATE ONLY AND THEIR  
EXACT POSITION SHOULD BE PROVEN ON SITE. NO GUARANTEE IS  
GIVEN THAT ALL EXISTING SERVICES ARE SHOWN. SPECIAL  
CONSIDERATION SHOULD BE GIVEN TO CONSTRUCTION PROCEDURES  
UNDER OVERHEAD ELECTRICITY TRANSMISSION LINES.

Rev	Amendments	Approved	Date
3	ISSUED AS CONSTRUCTED	B.W	13-02-25
2	CH231.55 ADDED	B.W	18-10-24
1	AMENDMENTS FOR SUPERLOT	B.W	11-10-24
0	ISSUED FOR CONSTRUCTION	B.W	10-05-24
A	PRELIMINARY ISSUE	B.W	07-02-24



© Spiire Australia Pty Ltd All Rights Reserved  
This document is produced by Spiire Australia Pty Ltd solely for the  
benefit of and use by the client in accordance with the terms of the  
retainer. Spiire Australia Pty Ltd does not and shall not assume any  
responsibility or liability whatsoever to any third party arising out of  
any use or reliance by third party on the content of this document.



1/126 Albert Road Warragul  
Victoria 3820 Australia T 61 3 5644 5000  
spiire.com.au ABN 55 050 029 635



Designed  
D.PRATT  
Authorised  
B.WAREHAM  
Checked  
B.IBBS - PE0007167  
Date  
OCTOBER 24

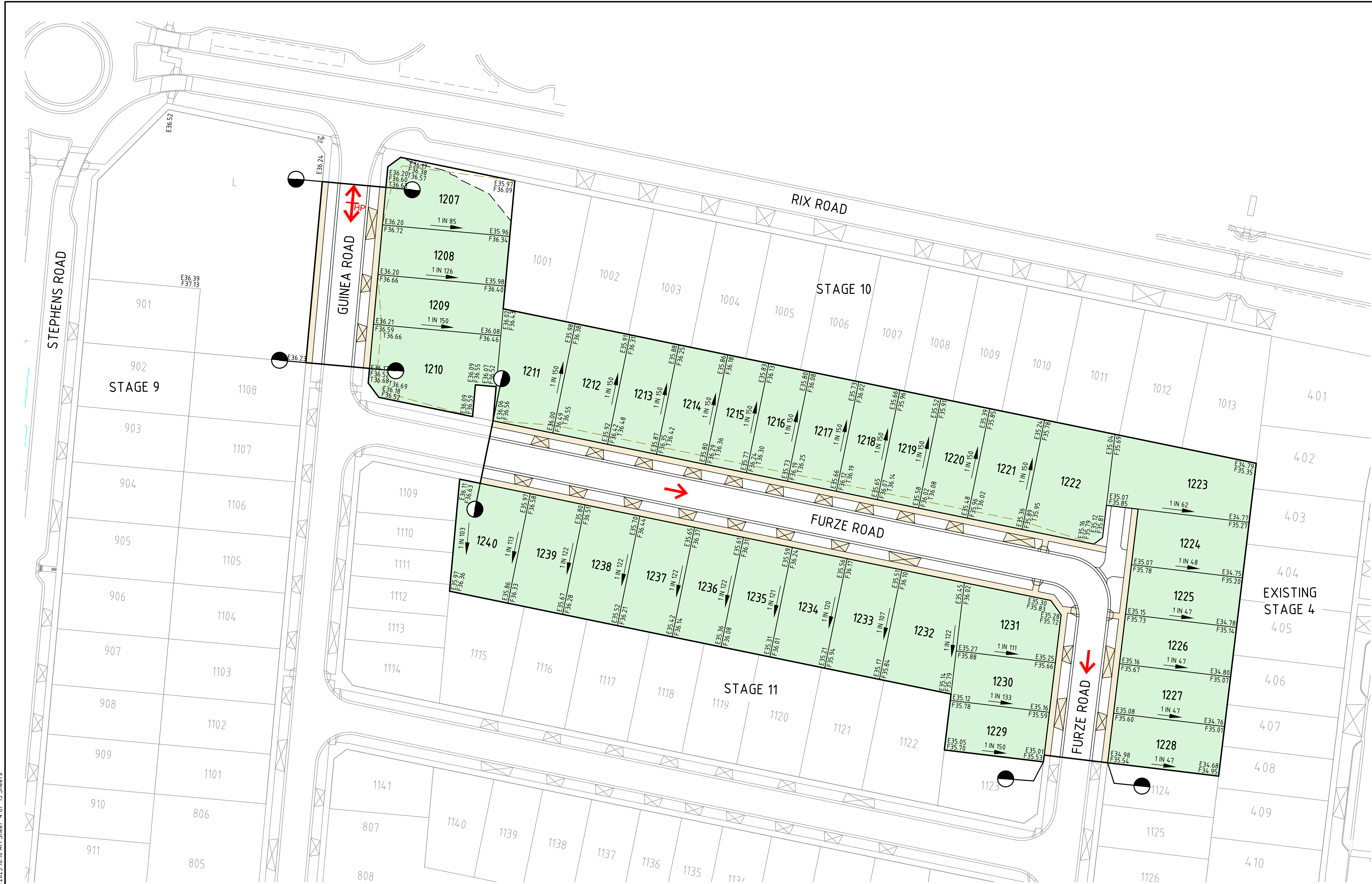
**OFFICER CENTRAL  
STAGE 12  
ROAD AND DRAINAGE  
ROAD LAYOUT PLANS - FACE PLAN**  
CARDINIA SHIRE COUNCIL  
YOURLAND PTY LTD



**AS CONSTRUCTED** Drg No 310311CR200 Rev 3







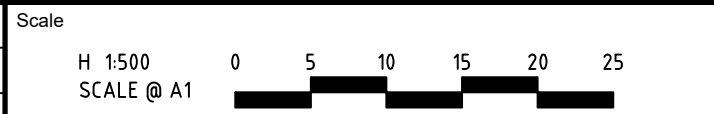


 FILL GREATER THAN 200mm  
 CUT GREATER THAN 200mm



**WARNING**  
BEWARE OF UNDERGROUND/OVERHEAD SERVICES  
THE LOCATION OF SERVICES ARE APPROXIMATE ONLY AND THEIR EXACT POSITION SHOULD BE PROVEN ON SITE. NO GUARANTEE IS GIVEN THAT ALL EXISTING SERVICES ARE SHOWN. SPECIAL CONSIDERATION SHOULD BE GIVEN TO CONSTRUCTION PROCEDURES UNDER OVERHEAD ELECTRICITY TRANSMISSION LINES.

3	ISSUED AS CONSTRUCTED	B.W	13-02-25
2	HATCHING AMENDED AND SUPERLOT LEVELS ADDED	B.W	18-10-24
1	AMENDMENTS FOR SUPERLOT	B.W	11-10-24
0	ISSUED FOR CONSTRUCTION	B.W	10-05-24
A	PRELIMINARY ISSUE	B.W	07-02-24
Rev	Amendments	Approved	Date



© Spiire Australia Pty Ltd All Rights Reserved  
This document is produced by Spiire Australia Pty Ltd solely for the benefit of and use by the client in accordance with the terms of the retainer. Spiire Australia Pty Ltd does not and shall not assume any responsibility or liability whatsoever to any third party arising out of any use or reliance by third party on the content of this document.



1/126 Albert Road Warragul  
Victoria 3820 Australia T 61 3 5644 5000  
spiire.com.au ABN 55 050 029 635



Designed  
D.PRATT  
Authorised  
B.WAREHAM  
Checked  
B.IBBS - PE0007167  
Date  
OCTOBER 24

**OFFICER CENTRAL  
STAGE 12  
ROAD AND DRAINAGE  
ROAD LAYOUT PLANS - EARTHWORKS PLAN**  
CARDINIA SHIRE COUNCIL  
YOURLAND PTY LTD

**AS CONSTRUCTED** Drg No 310311CR202 Rev 3